

Love  
Leeds  
Parks



Invest in Our City's Future  
[www.loveleedsparks.org.uk](http://www.loveleedsparks.org.uk)  
0113 378 1608

# Love Leeds Parks Business Supporter Programme



## Introduction:

We are seeking business partners to support Love Leeds Parks, a new initiative to protect and improve public green space in Leeds. Parks and green spaces are crucial for the health and wealth of our city. They clean the air, attract businesses and visitors to the city, and help keep staff healthy and happy. Your support will fund community focused improvements to these vital community spaces and bring benefits to you and your business.

## About Love Leeds Parks:

Love Leeds Parks is a charitable initiative dedicated to protecting and improving public green space in Leeds. We raise awareness about the benefits of urban green space, promote community engagement in parks, and generate charitable donations for community focused park projects. The project was set up by [Leeds Community Foundation](#), [Leeds Parks and Green Spaces Forum](#), and [Leeds City Council](#). It is currently part of 'Rethinking Parks,' a national programme aimed at developing innovative new models for parks, funded by the National Lottery Community Fund, National Lottery Heritage Fund, and Nesta.

## What are the benefits of partnership?

- Help protect and improve over 600 parks, woodlands and other vital greenspaces in Leeds
- Demonstrate your CSR commitment to public green space which has many benefits for the environment, health and wellbeing of staff, community cohesion and the economy.
- Generate positive publicity and brand awareness through association with the partnership
- Drive sales and generate business opportunities through publicity and networking
- Play your part in ensuring parks and green spaces are enjoyed by future generations

## How will Love Leeds Parks improve the city's parks and green spaces?

Donated funds will be distributed to community projects via the Leeds Parks Fund managed by Leeds Community Foundation (registered charity no: 1096892). The Leeds Parks Fund's annual grants round generates increased interest and community involvement in parks and green spaces, as well as funds, at a time of growing awareness of their importance to life quality in urban areas.



## **Business Supporter Programme:**

We have launched a programme to enable businesses support Love Leeds Parks by making a donation, in return for which you will receive the following benefits:

### **Gold Partner £1,000**

- Play a key role in Love Leeds Parks publicity campaigns
- Nominate a representative to the grants panel which chooses funded projects
- Acknowledgement on our website, social media and communications
- Use of the Love Leeds Parks logo on marketing materials

### **Silver Partner £500**

- Acknowledgement on our website, social media and communications
- Use of the Love Leeds Parks logo on marketing materials

### **Bronze Partner £200**

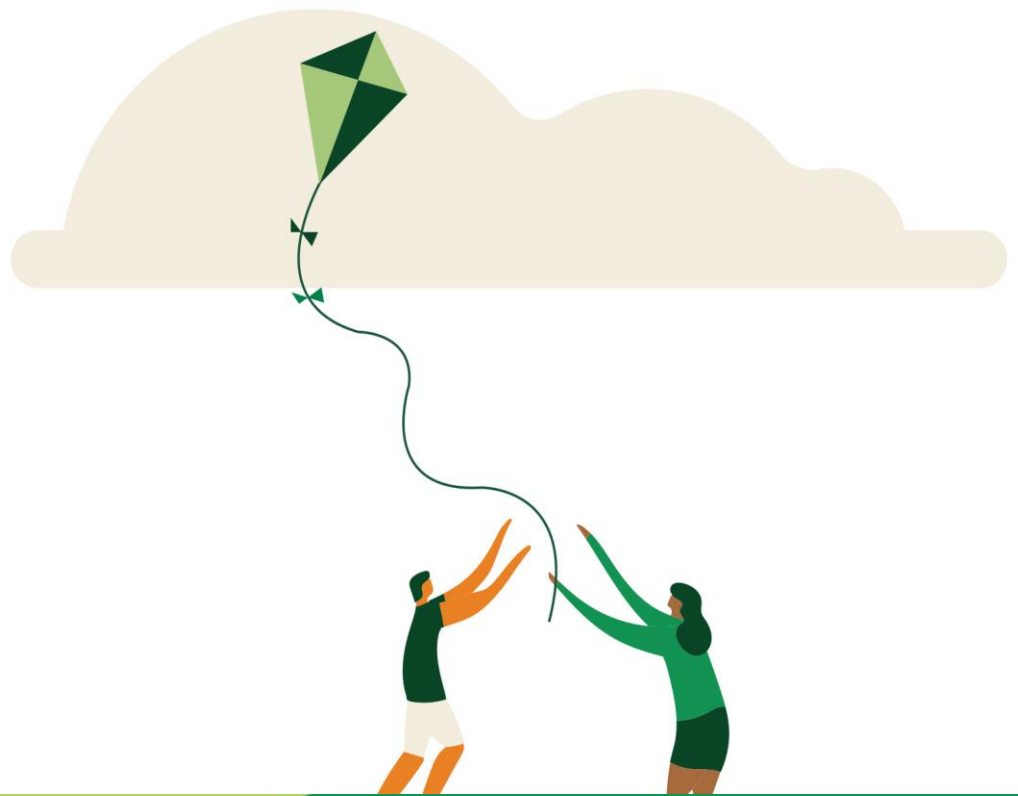
- Acknowledgement on our website, social media and communications

## **For more information:**

Call us on 0113 3786002 with any queries

Or to discuss sponsorship opportunities.

Email [loveleedsparks@leeds.gov.uk](mailto:loveleedsparks@leeds.gov.uk)



**Your donation entitles you to benefits for a Calendar year and is payable at any time.**

Please choose the level of business supporter donation:

Gold - £1000 per year

Silver - £500 per year

Bronze - £200 per year

Please select a donation method to suit you:

I will donate by direct debit Monthly

direct debit Annually

Invoice Annually

Date of first donation:

Title:..... First name.....

Surname: .....

Position in company: .....

Company Name: .....

Address:.....

Post code:.....Phone:.....Email:.....

Signed:.....

Date:.....

**I am happy for Love Leeds Parks to contact me by phone and email from time to time about their work and the impact of my donation.**